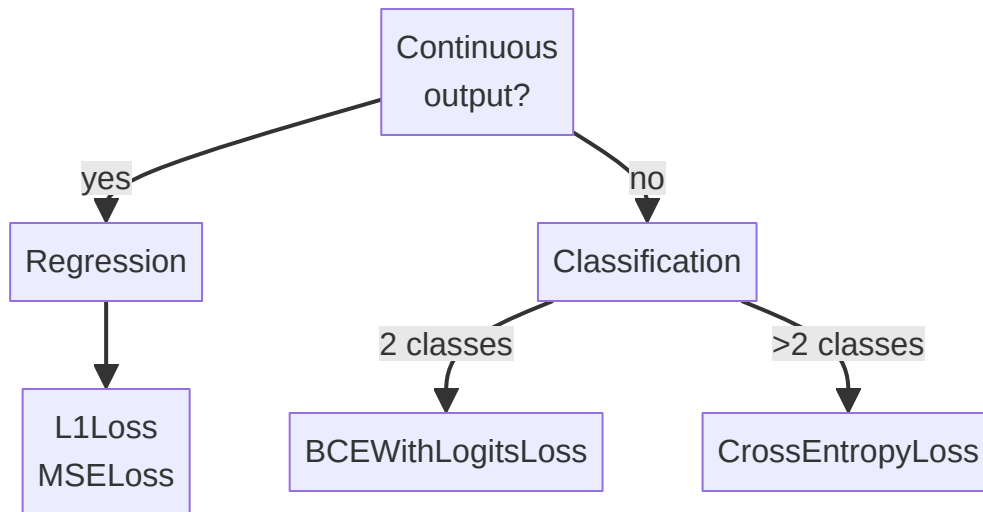


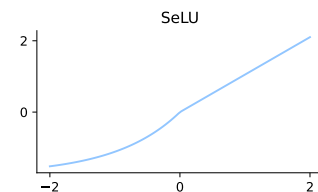
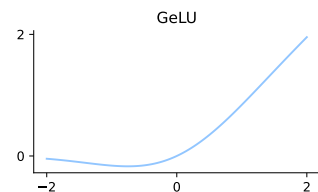
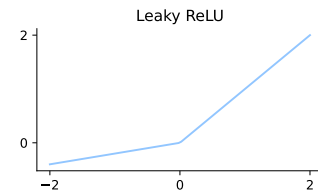
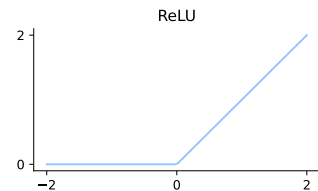
# A Practical Guide to Deep Network Design

# Loss Functions



# Activation Functions

- Try ReLU
- If ReLU fails, try:
  - Leaky ReLU / PReLU
- GeLU for sophisticated models



# SGD

- Select largest possible batch size
- momentum = 0.9
- Tune learning rate

```
b = 0
for epoch in range(n):
    for i in range(len(dataset) // batch_size):
        batch = dataset[i * batch_size : (i + 1) * batch_size]
        for (x, y) in batch:
            b =  $\nabla l(\theta|x, y)$  + momentum * b
             $\theta = \theta - \epsilon * b.mT$ 
```